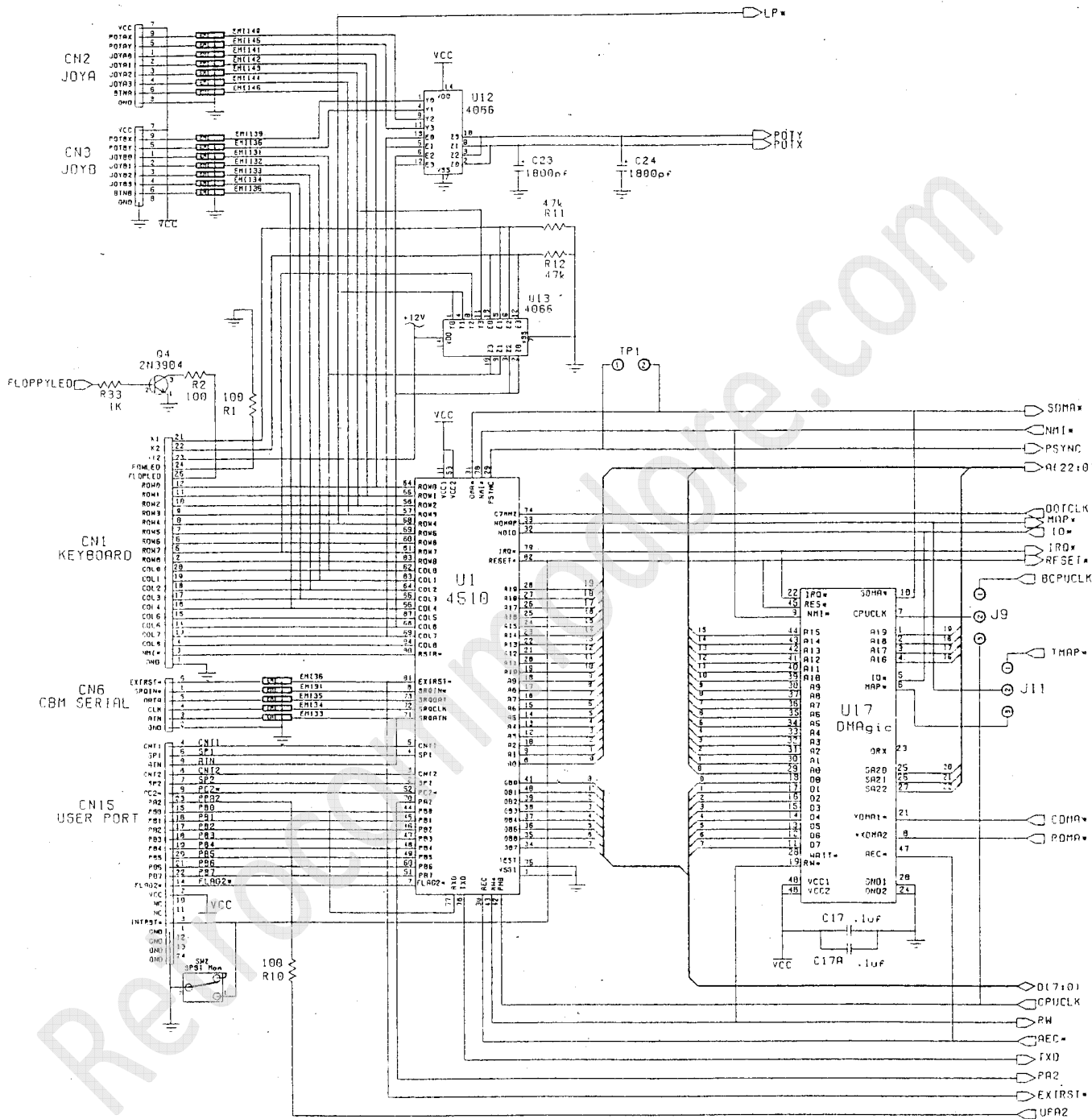
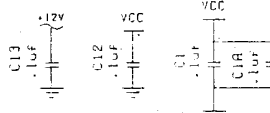
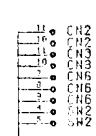


# C65 R5



REPRODUCTION FOR SALE ON REPAIRSITE.COM

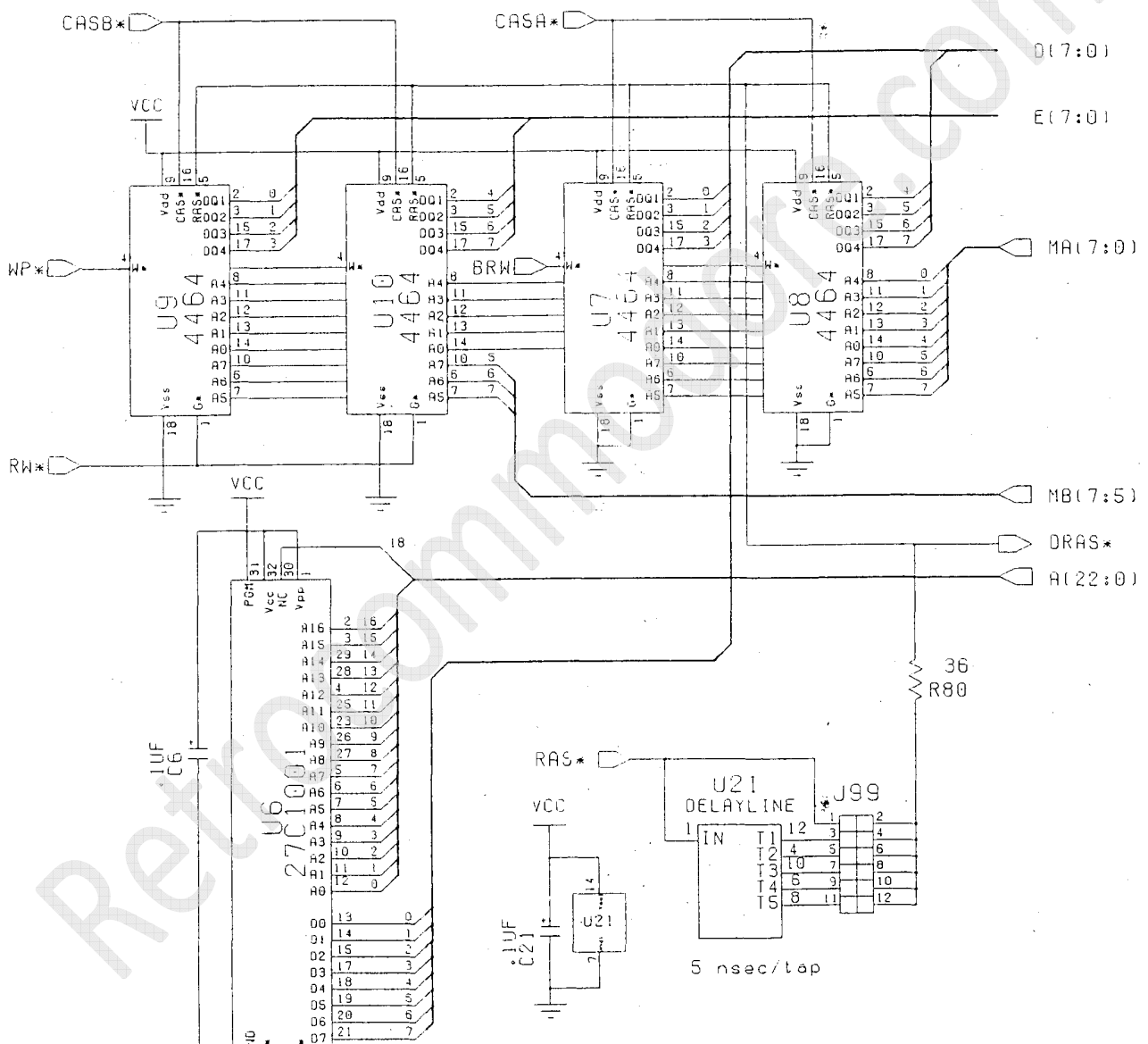


© 1988 COMMODORE BUSINESS MACHINES  
 Information contained herein is the confidential and trade secret property of Commodore Business Machines, Inc. Any reproduction or disclosure of this information without the prior written permission of Commodore is strictly prohibited.

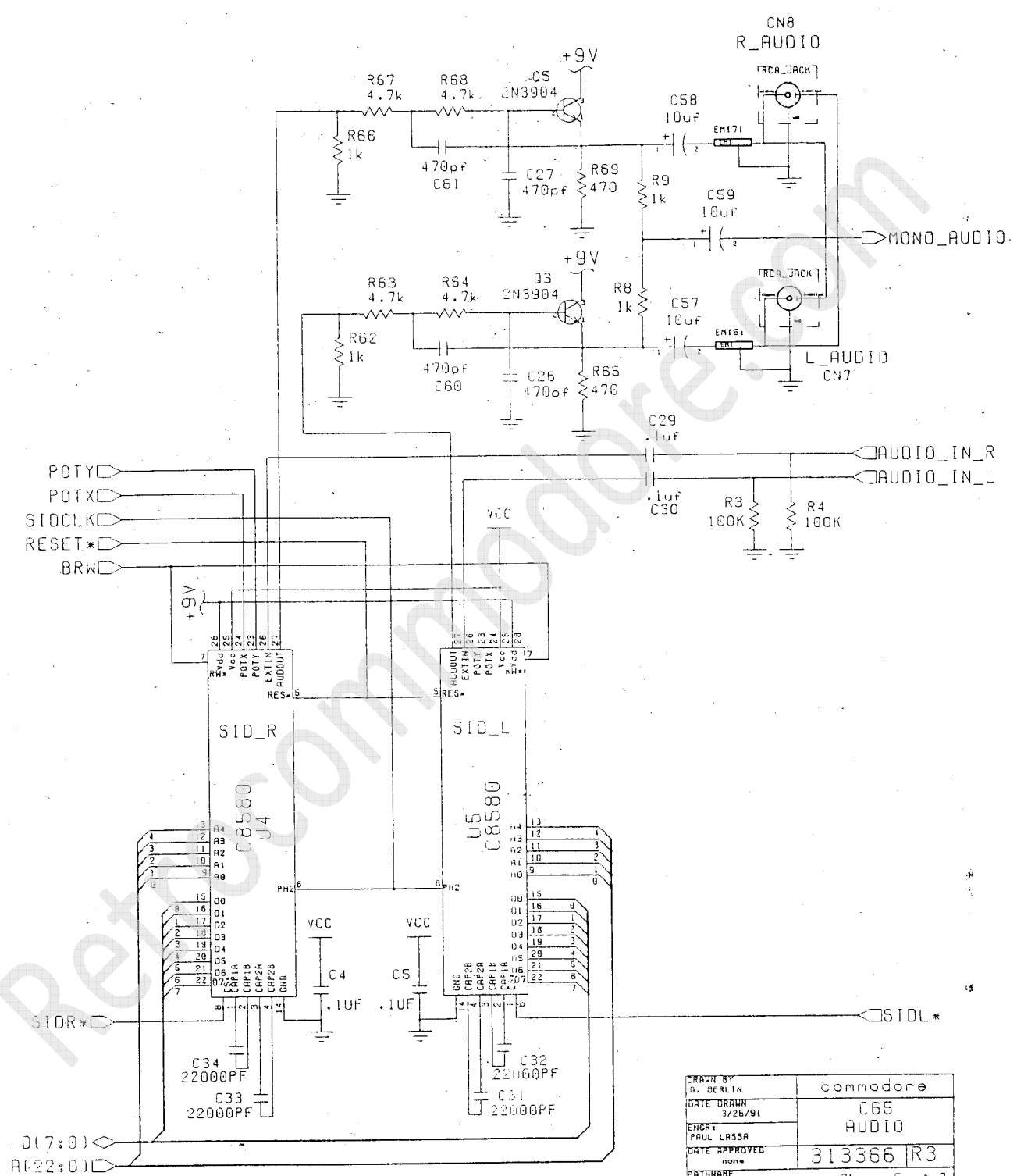
C.R.B. Controlled  
 No annual changes may be made to this document.

DESIGNED BY	D. Berlin	COMMODORE
DATE DESIGNED	7/27/91	C65
DESIGNED BY	PAUL LARSA	CPU AND OMR
DATE APPROVED	***	3133661R3
REVISION		/project/c65/r3.cpu Sheet 2 of 2



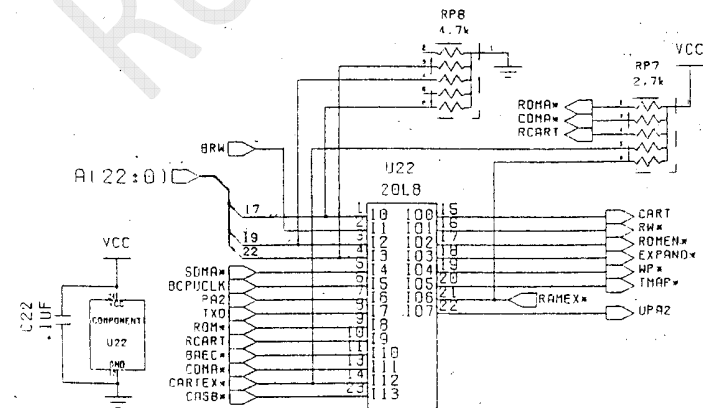
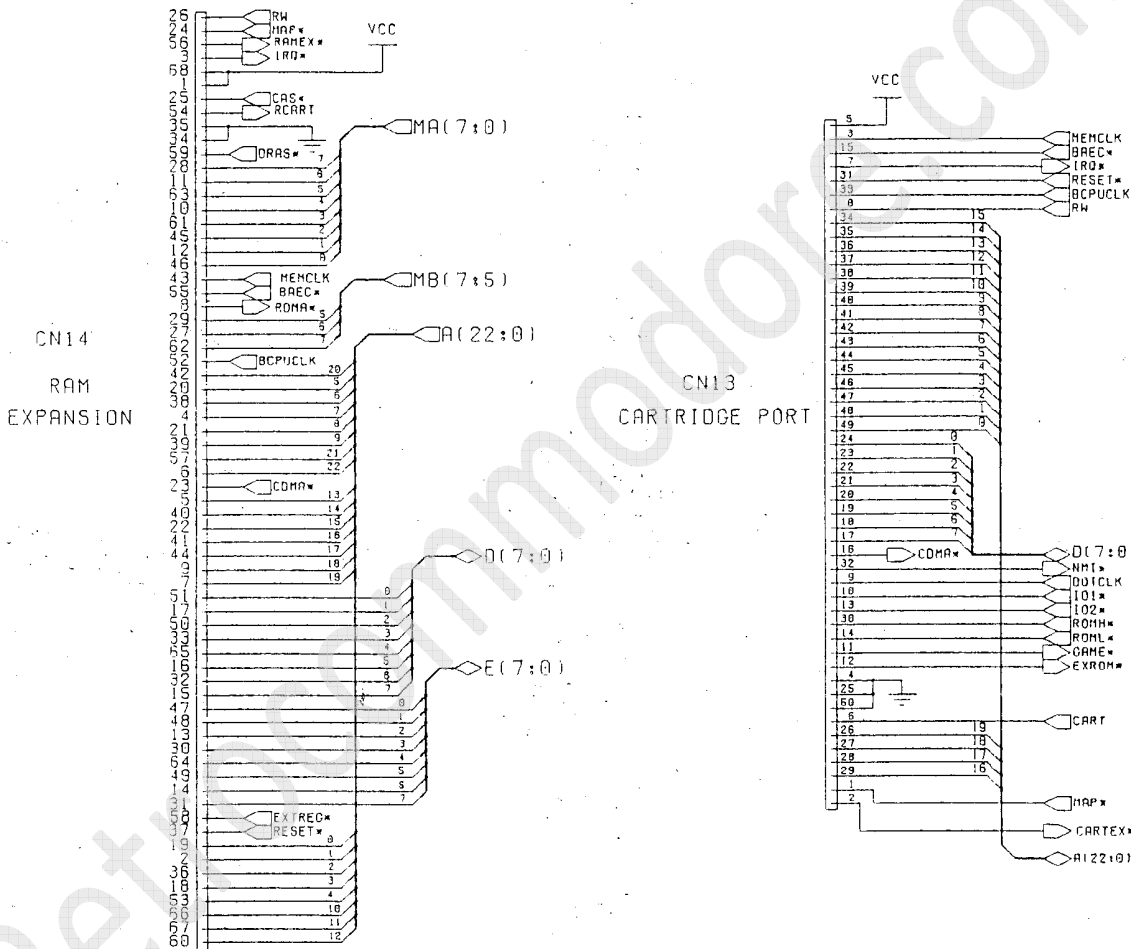
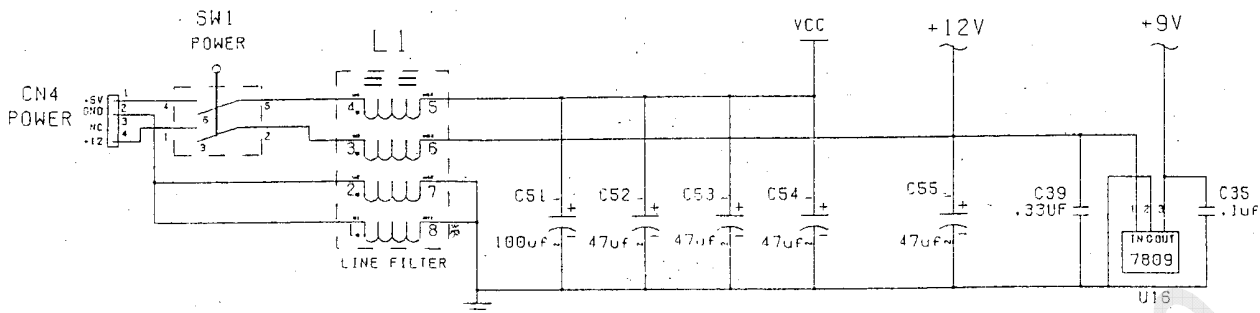


DRAWN BY G. Berlin	Commodore
DATE DRAWN 3/1/91	C65
ENGR PAUL LASSA	MEMORY
DATE APPROVED none	313366 R3
PATHNAME /project/c65/r3 memory	Sheet 4 of 7

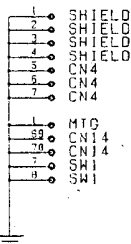
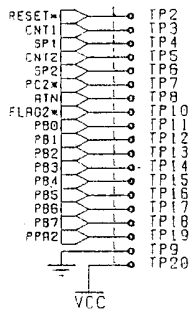


DRAWN BY	G. BERLIN	commodore
DATE DRAWN	3/26/91	C65
ENGR:	PAUL LASSA	AUDIO
DATE APPROVED	none	313366 R3
PATHNAME	/project/c65/r3 audio	Sheet 5 of 7





USER PORT TEST POINTS



DRAWN BY	G. Berlin	commodore
DATE DRAWN	3/25/91	C65
CHECKED	PAUL LASSA	Power, PALS, etc...
DATE APPROVED		313366/R3
PATHNAME	/project/c65/r3 also	Sheet 7 of 7